



18 Baltusrol Circuit HEATHERTON VIC

3 2 2

Nestled within the peaceful and highly sought-after Baltusrol Estate adjacent Kingston Heath Golf Club, this beautifully presented home impresses with its sun-filled spaces, stylish finishes and generous yet easy-to-maintain setting.

Ready to move into, the accommodation is thoughtfully zoned and includes a ground-floor living/dining zone and well-equipped kitchen (gas cooktop & dishwasher) along with three peacefully positioned upstairs bedrooms, including the ensuited master.

With plenty of room to host guests inside or out on the patio with pergola, the home is bound to tick the boxes of avid entertainers, while its tranquil & extremely private rear garden will appeal to those who simply enjoy relaxing in the open air.

With ducted heating throughout and evaporative cooling upstairs, the home also features a sparkling main bathroom and guest powder room plus a full laundry with outdoor access, pale wide-board flooring and double auto garage with handy house access.

In the prized catchment area for Cheltenham Secondary

Type : Townhouse

Price : \$ 925,000

View : <https://www.lewinrealestate.com.au/sale/vic/bayside/heatherton/residential/townhouse/8023534>



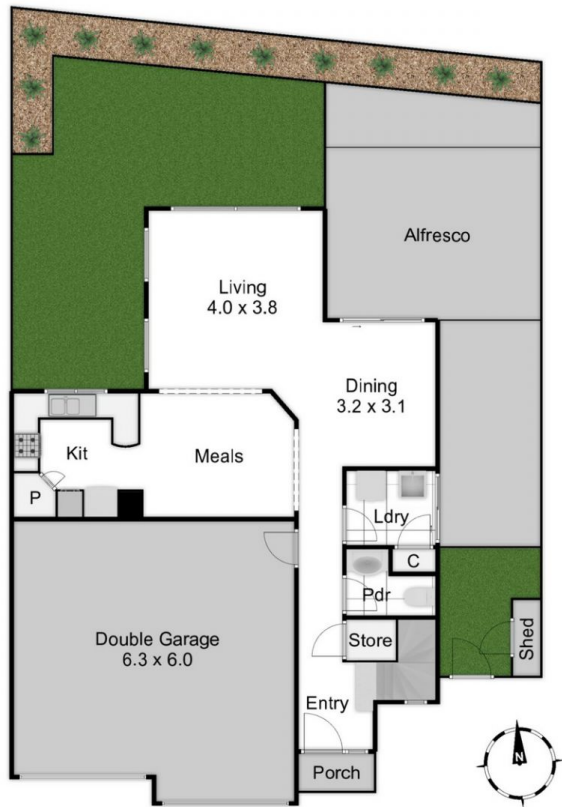
Brian Lewin
0434047939



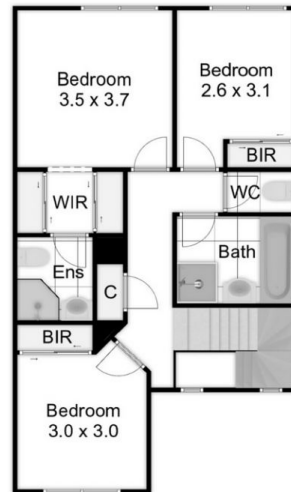
Lesley Kilby
0428277263

[For full version visit the website](https://www.lewinrealestate.com.au)

<https://www.lewinrealestate.com.au>



Ground Floor/Site Plan



First Floor

Lewin
real estate

18 Baltustrol Circuit Heatherton

This floorplan is a sketch. All data shown is general only.
NB: All dimensions stated are approximate only and should not be taken as definite.